

Evolution

Brainpop—Camouflage

Name:

Period:

Watch the Brainpop on camouflage, then answer the questions below. You can also read about the advantages of camouflage on p.313.

_____ 1. What can you infer about animals whose fur turns white during winter?

- a. they prey on animals who can't see the color white
- b. they are hunted by predators who can't see the color white
- c. they live in environments that are very snowy during the winter
- d. they live in environments with lots of white trees

_____ 2. What might happen to animals if they didn't have camouflage?

- a. they would die quicker
- b. they would lead longer lives
- c. they would have access to more food
- d. they would be preyed on less often

_____ 3. What does disruptive coloration do?

- a. makes animals difficult to see at night
- b. makes animals' distances difficult to judge
- c. makes animals' outlines difficult to judge
- d. makes animals blend in with trees and plants

_____ 4. A bug that is the same color as the leaves it lives on is said to have...

- a. disruptive coloration
- b. protective coloration
- c. countershading
- d. chromatophores

_____ 5. What statement is true of animals that have countershading?

- a. they usually have darker-colored backs and lighter-colored bellies
- b. they usually have lighter-colored backs and darker-colored bellies
- c. they usually have stripes on their backs and solid-colored bellies
- d. they are usually prey animals, and not predators

_____ 6. Which of the following is an example of countershading?

- a. an orchid looks like an insect to promote pollination
- b. the stripes of a herd of running zebras confuses a lion
- c. a shark blends in with the ocean, hiding from its prey
- d. the fur of an Arctic fox turns white over the winter

_____ 7. What might happen if an octopus were chased by a predator?

- a. it would seek out other octopuses in order to blend into a group
- b. it would burrow beneath the ocean floor
- c. it would head for an environment that matched its skin color
- d. it would quickly change its skin color to blend into its environment

_____ 8. Besides camouflage, what do some animals use their chromatophores for?

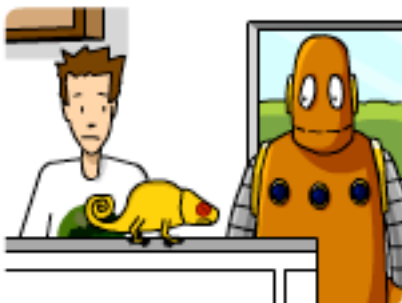
- a. to distract predators
- b. to communicate their moods
- c. to store energy
- d. to attract mates

_____ 9. Which animal uses camouflage in order to hide from prey?

- a. a zebra in grass
- b. a tiger in a forest
- c. a penguin in the ocean
- d. a green butterfly on a leaf

_____ 10. Military uniforms simulate the types of camouflage used by animals. In this context, what does "simulate" mean?

- a. misuse
- b. disguise
- c. exaggerate
- d. imitate



Look at the cartoon from the video. What does a chameleon have to do with camouflage?