

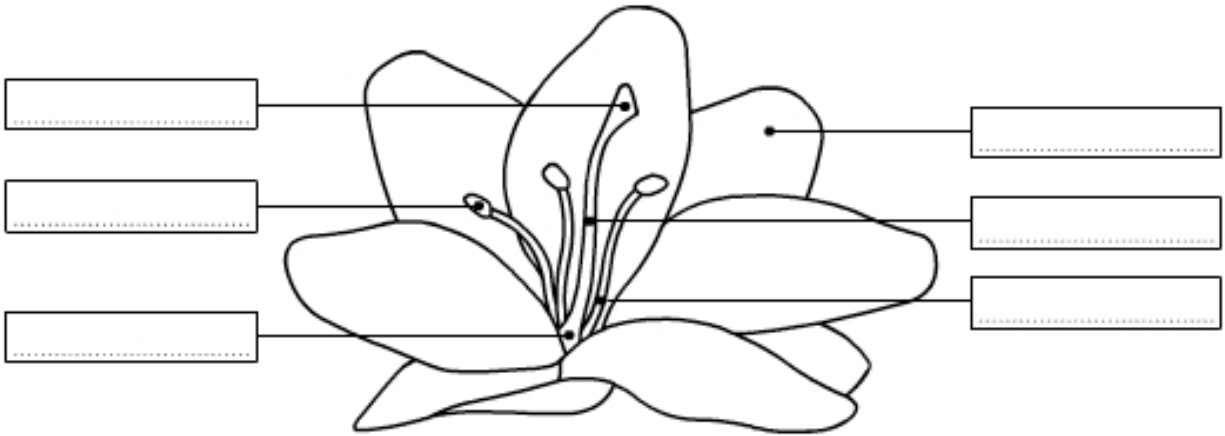
Brainpop—Pollination

Name:





Period:

Label and color code the diagram below.

STIGMA: yellow PETAL: pink OVARY: purple STYLE: red FILAMENT: blue ANTHHER: orange



Number the boxes below to show the correct sequence of pollination.

			
Fertilization happens when the male pollen and female ovule combine.	A bee carries pollen to a new flower.	The fertilized ovule grows into a seed.	A pollen grain is collected by the stigma.

Brainpop—Pollination

Name:

Period:

Watch the Brainpop on pollination and answer the questions below. You can also use Chapter 12, Section 4 to help you.

- _____ 1. Where is a flower's pollen stored before pollination?
 - a. the pistil b. the stamen c. the ovary
- _____ 2. Where does pollen need to be deposited for fertilization to occur?
 - a. the petal b. the stamen c. the pistil
- _____ 3. How do most grasses and trees pollinate?
 - a. by wind pollination b. by insect pollination c. by bat pollination
- _____ 4. Which is the most common insect pollinator of flowers?
 - a. the ant b. the honeybee c. the grasshopper
- _____ 5. How does insect pollination benefit the insect?
 - a. the insect uses the fertilized ovule as food
 - b. the insect uses the plant's nectar as food
 - c. the insect uses the plant's pollen as food
- _____ 6. How does fertilization occur?
 - a. the flower is sprayed with pollen
 - b. two seeds attach themselves to one plant
 - c. the male pollen combines with the female ovule
- _____ 7. What might pollinate a night-blooming plant?
 - a. a bat b. the sun c. a mosquito
- _____ 8. How do flowers attract pollinators?
 - a. with closed leaves and green stems
 - b. with bright colors and sweet nectar
 - c. with lots of money
- _____ 9. What does a fertilized ovule become?
 - a. a stamen b. a fruit c. a seed
- _____ 10. How does the honeybee collect pollen?
 - a. it swallows the pollen
 - b. it brushes against the pollen as it collects nectar
 - c. it puts the pollen in a special pouch

turn over the paper and label the diagrams on the other side