

Cell Biology
Mitosis in Animal Cells

Name:
Period:

You can use Chapter 5, Section 2 of your textbook to help you with this assignment.

Step 1—Cut out the 6 different diagrams that show changes in a cell during the cell cycle.

Step 2—Arrange the diagrams in the correct order (starting with a single cell), and glue them down below.

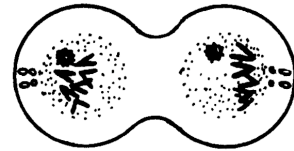
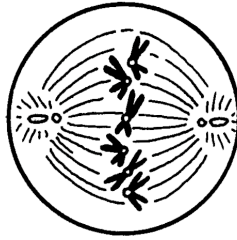
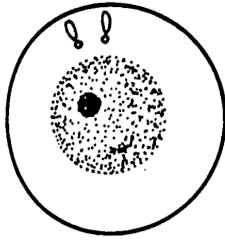
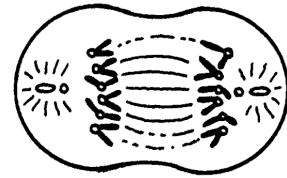
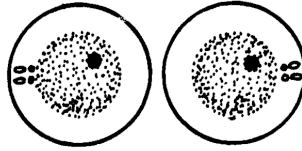
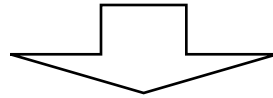
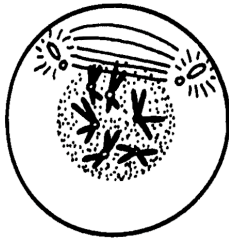
Step 3—Cut out and glue down the scrambled boxes of facts to describe important changes at each step.

diagram	important changes in the cell

Cell Biology
Mitosis in Animal Cells

**do not separate
 these two cells!**

Name:
 Period:



chromosomes condense into paired chromatids
cell membrane partially pinches off nuclear membrane reforms chromosomes decondense (relax)
paired chromatids line up along center of cell nuclear membrane dissolves
two new daughter cells are created cell membrane completely pinches off
chromosomes are copied in the nucleus
cell membrane begins to pinch off paired chromatids separate chromosomes pulled to far sides of cell