

Structure and Function in Living Systems

Name: _____

Pollination

Period: _____

Follow the directions below to color-code the diagrams and to answer the questions. You can use Chapter 12, Section 4 and Chapter 13, Section 2 of your textbook to help you. Use colored pencils, and check off each box as you finish that part of the instructions.

- For a flowering plant to reproduce sexually, the pollen created by the male part of the flower must travel to the female part of another flower. There, the pollen will join with an egg and fertilize it. Quickly re-read p. 380 of your textbook, then finish the following sentences:

The male reproductive structure of a flower is called the _____ .

The female reproductive structure of a flower is called the _____ .

Pollination happens when....

Fertilization happens when...

- On both of the coloring pages, color the word STAMEN light blue .
- On both of the coloring pages, color the word PISTIL pink .
- In each of the seven flower diagrams, carefully color any structures with a ♂ light blue .
- In each of the seven flower diagrams, carefully color any structures with an ♀ pink .

Is the male or female structure that is found *in* the center of every flower? _____

Is the male or female structure that is found *around* the center of every flower? _____

Look carefully at your diagrams. What is the only plant on the pages that is NOT pollinated by animals?

The plant that is not pollinated by an animal is the _____ .

- On both of the coloring pages, color the word FRAGRANCE purple , and anything with an F purple as well .
- On both of the coloring pages, color the word NECTAR orange , and anything with a G orange as well .

Put these terms in the blanks below: **egg, fertilization, fragrance, nectar, pistil, pollination, sperm, stamen**

Insects are attracted to flowers by a _____ . They then want to reach the

_____ in the bottom of the flower. When they crawl past the

_____ , they get pollen on their bodies. Any pollen on their bodies (from this

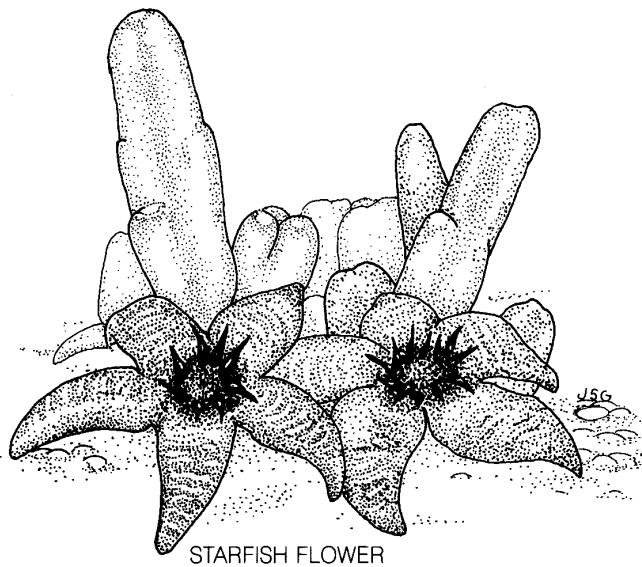
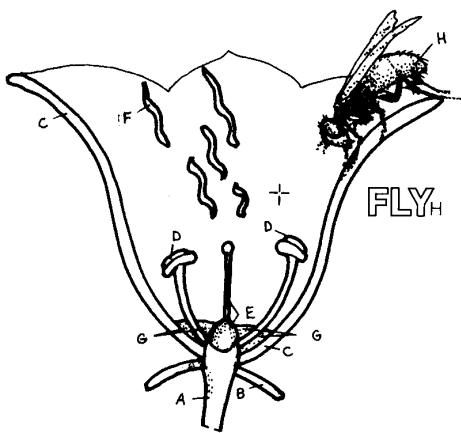
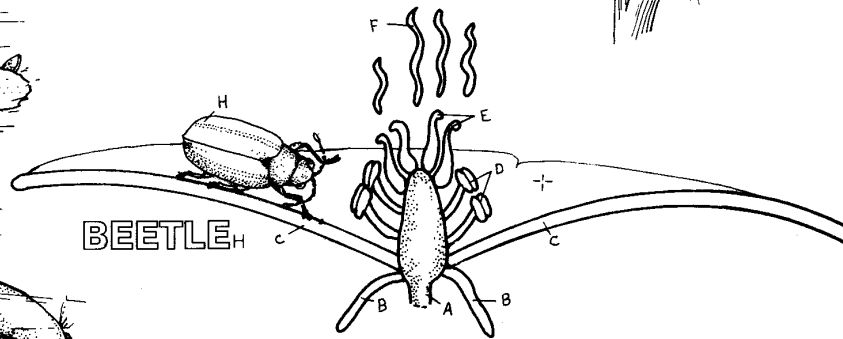
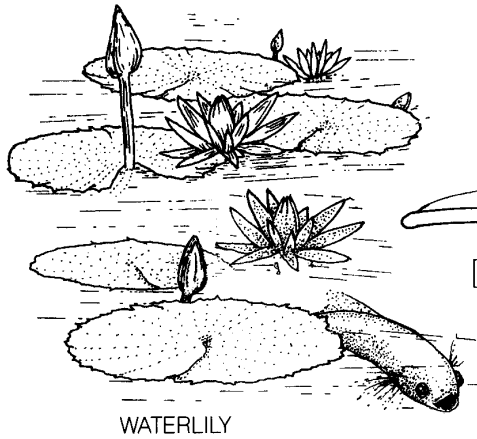
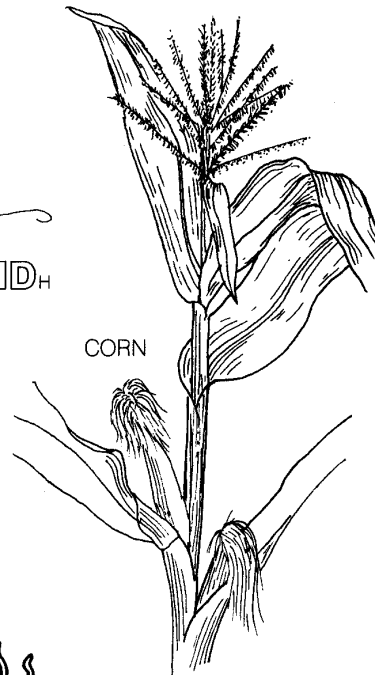
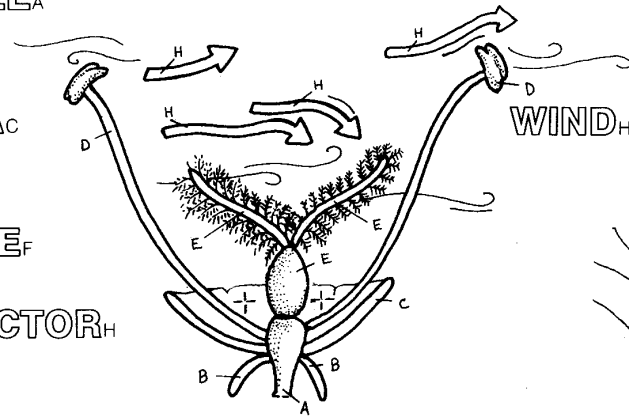
flower or another one) gets brushed onto the _____ , causing

_____ of the flower. Once the _____ in the pollen joins with

the _____ in the ovary, _____ happens.

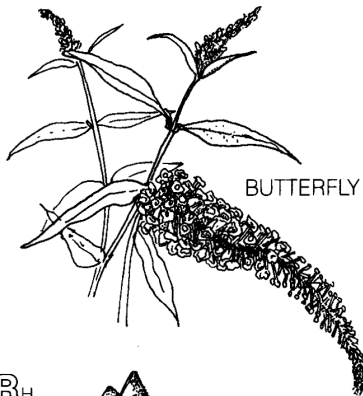
WIND, BEETLES AND FLIES.

- FLOWER★
- RECEPTACLE_A
- PERIANTH★
- CALYX_B
- COROLLA_C
- STAMEN_D
- PISTIL_E
- FRAGRANCE_F
- NECTAR_G
- POLLEN VECTOR_H

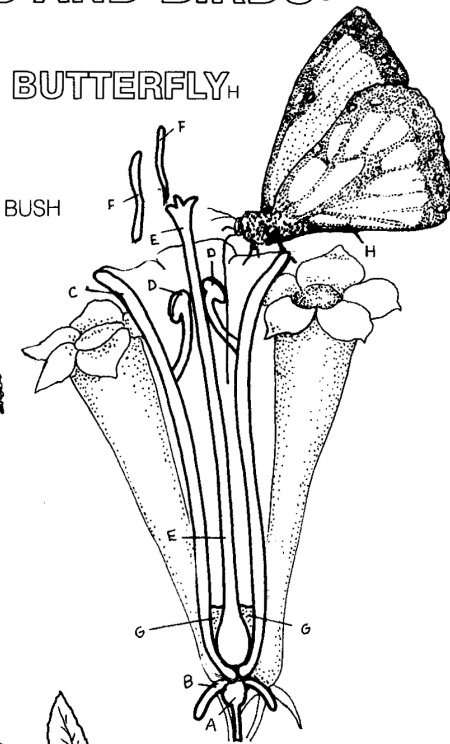


BUTTERFLIES, MOTHS, BEES AND BIRDS.

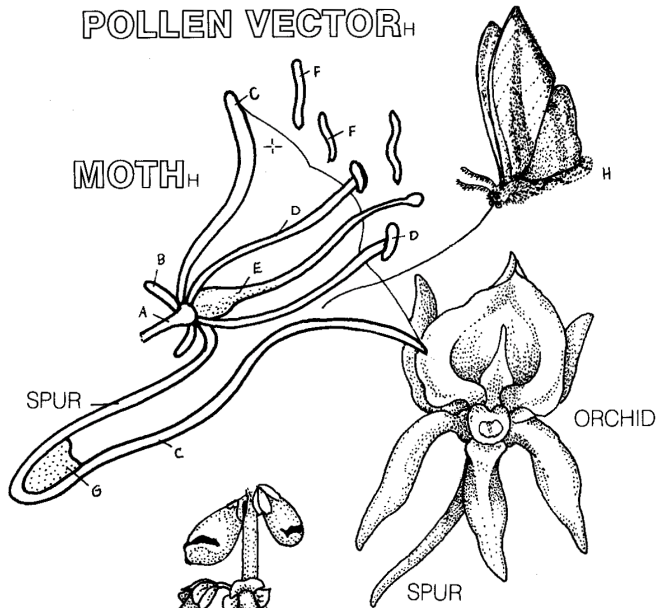
- FLOWER★
- RECEPTACLE_A
- PERIANTH★
- CALYX_B
- COROLLA_C
- STAMEN_D
- PISTIL_E
- FRAGRANCE_F
- NECTAR_G
- POLLEN VECTOR_H



BUTTERFLY BUSH



BUTTERFLY_H

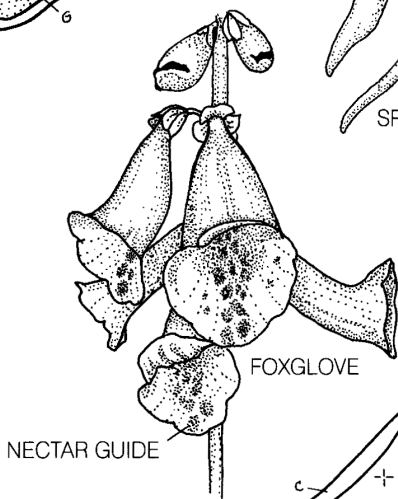


MOTH_H

SPUR

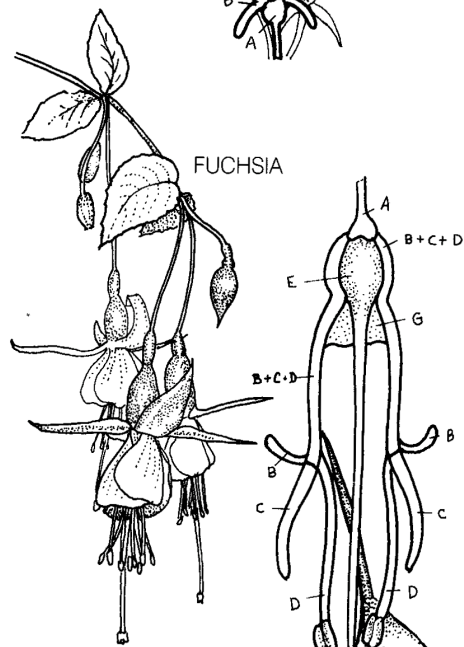
ORCHID

SPUR



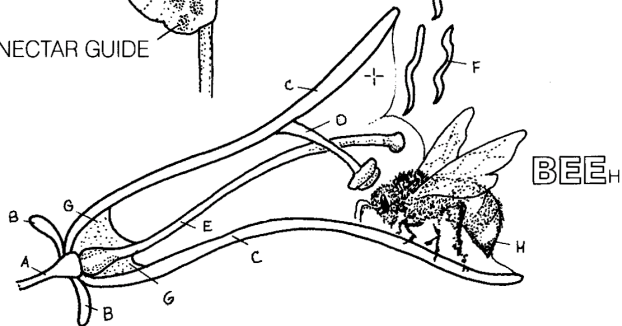
FOXGLOVE

NECTAR GUIDE



FUCHSIA

BIRD_H



BEE_H

